
	<b>Document</b>	<b>version: v1.6</b> <b>date: 2025-04-04</b>
<b>Reader Demo Tool – Getting Started</b>		

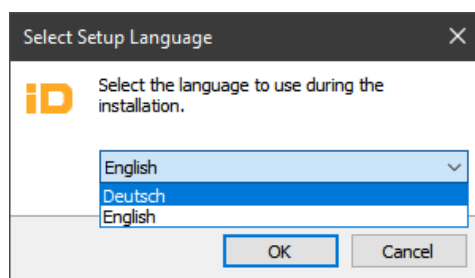
# READER DEMO TOOL

## 1 Install the Reader Demo Tool

To install the Reader Demo Tool execute the “iDTRONIC - Reader Demo Tool Setup”.

 iDTRONIC - Reader Demo Tool Setup 1.62.7d.exe 14.04.2021 22:19 Anwendung 17.149 KB

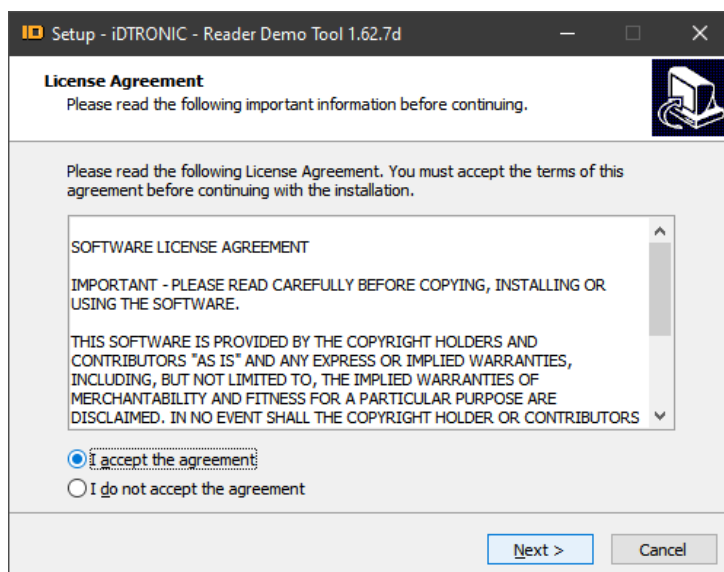
Step through the installation and select the options you like:




After this you will see the security information of Windows. Please chose OK

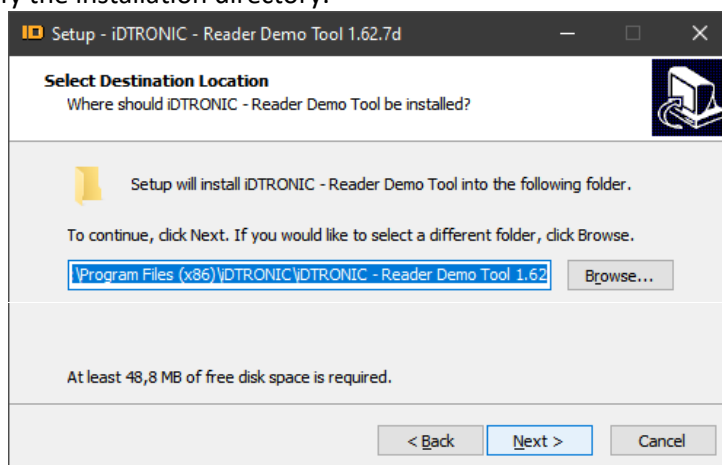


Accept the license agreement.

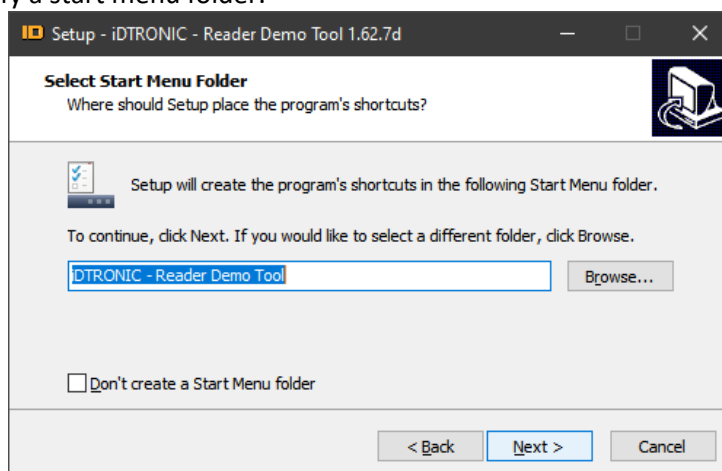


	<b>Document</b>	<b>version: v1.6</b> <b>date: 2025-04-04</b>
<b>Reader Demo Tool – Getting Started</b>		

Confirm or modify the installation directory.

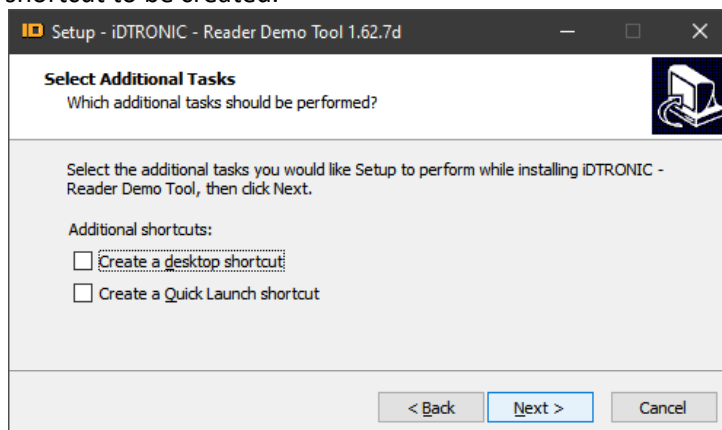



Confirm or modify a start menu folder.



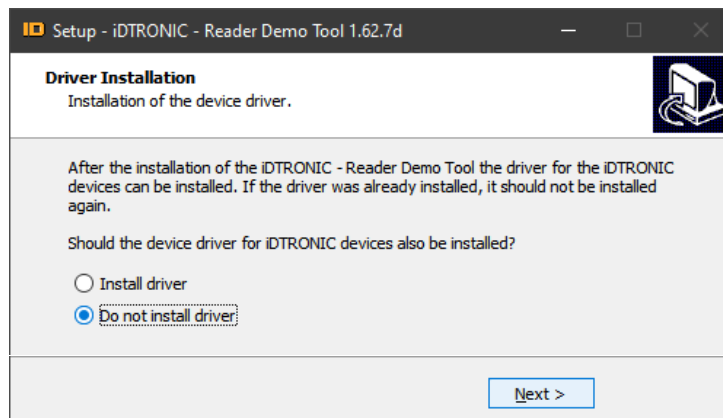
Wait until this installation process is finished and, confirm move forward.

Select a desktop shortcut to be created.

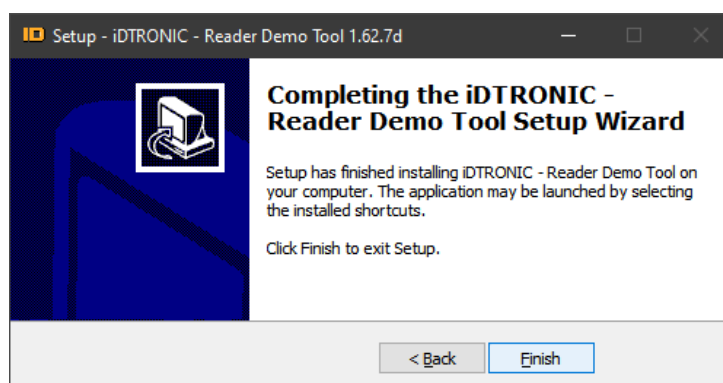



	<b>Document</b>	<b>version: v1.6</b> <b>date: 2025-04-04</b>
<b>Reader Demo Tool – Getting Started</b>		

You do not need to install this driver. The installation package was compiled for another serial interface type. This hardware uses the WCH CH340 family type USB interface. The driver installation is a separate process, described in the following chapter.



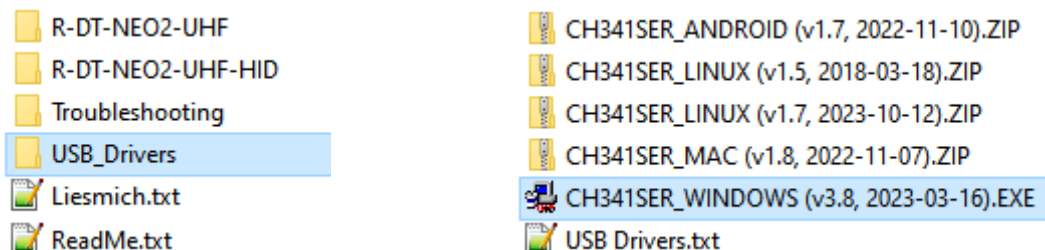
Click on [Finish] to finalize the installation.



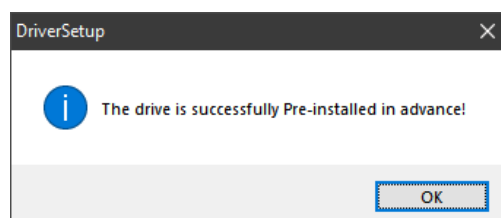
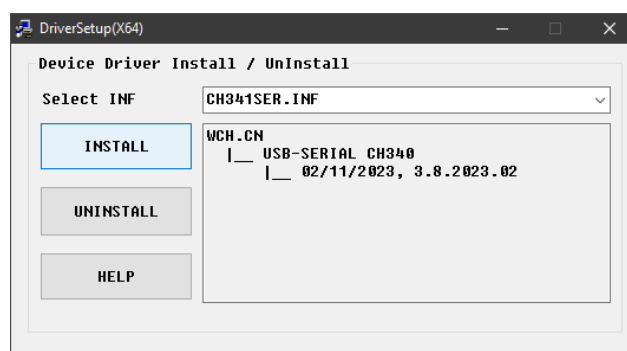
	<b>Document</b>	<b>version: v1.6</b> <b>date: 2025-04-04</b>
<b>Reader Demo Tool – Getting Started</b>		

## 2 Install Driver for UHF Reader

USB drivers are no longer installed automatically by the Windows operating system. So please use the files in folder “USB\_Drivers”.



The easiest way is to use the \*.exe file.

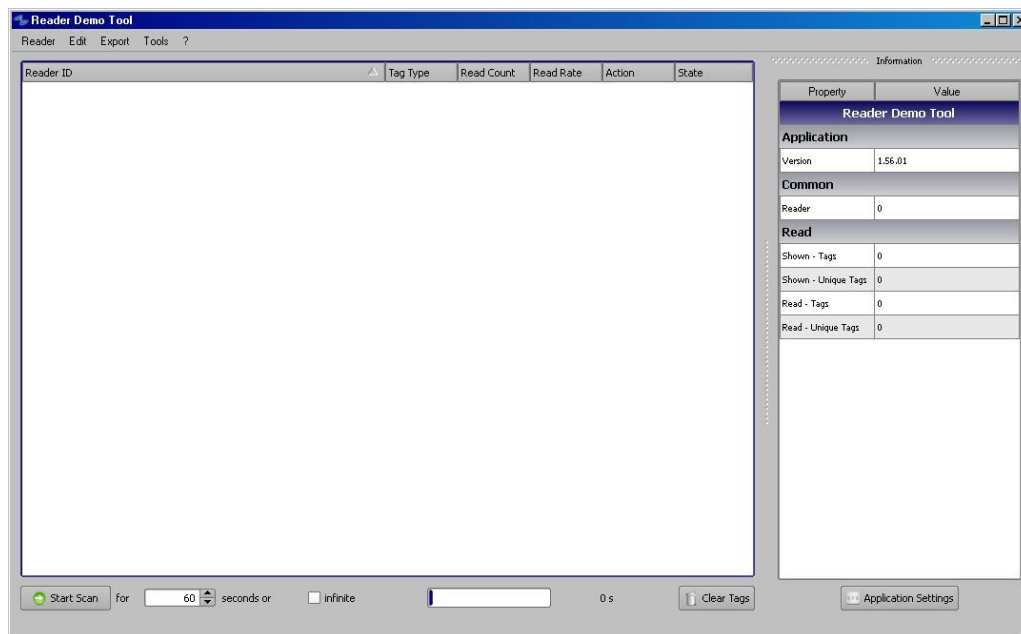


Feel free to check for updates on the website of the manufacturer:

<http://www.wch-ic.com/search?q=CH340&t=downloads>

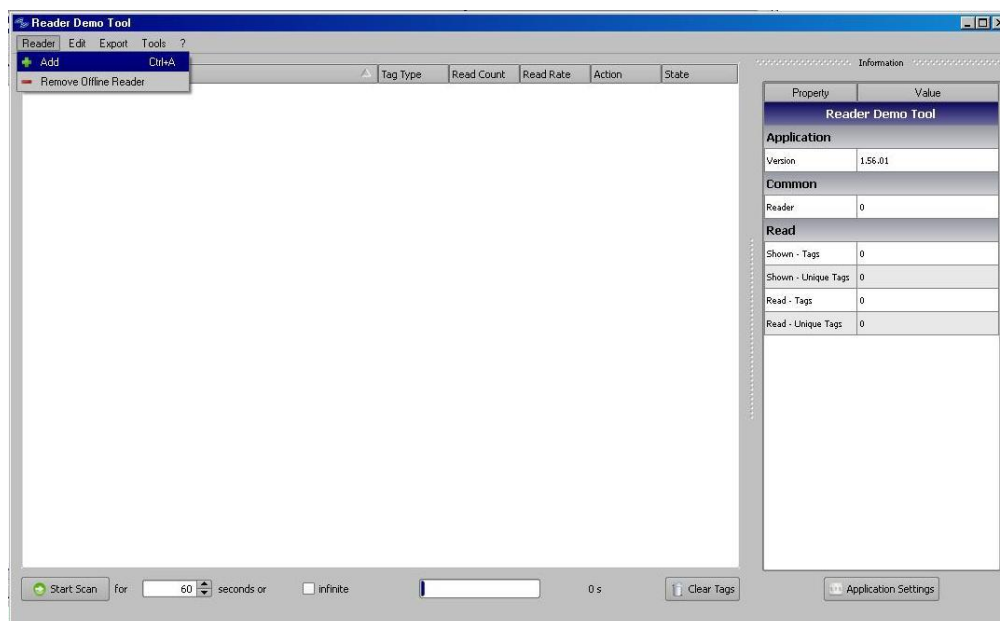
### 3 Add the reader to the Reader Demo Tool

After the installation start the Reader Demo Tool. You can identify it by this Logo.

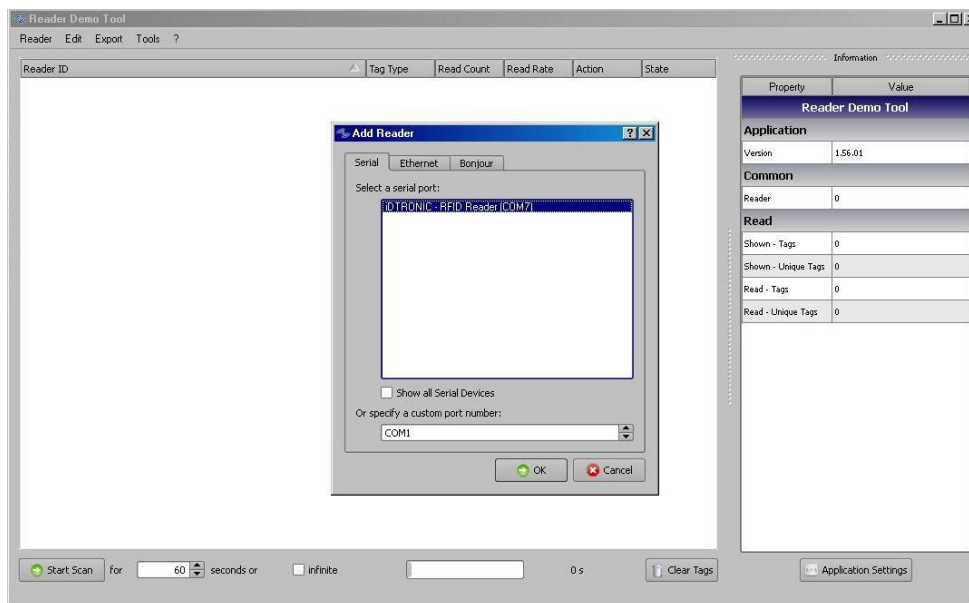


If the reader is not automatically detected and connected, you need to add it manually.

To add the reader to the Reader Demo Tool, select in the Menu -> Reader -> Add

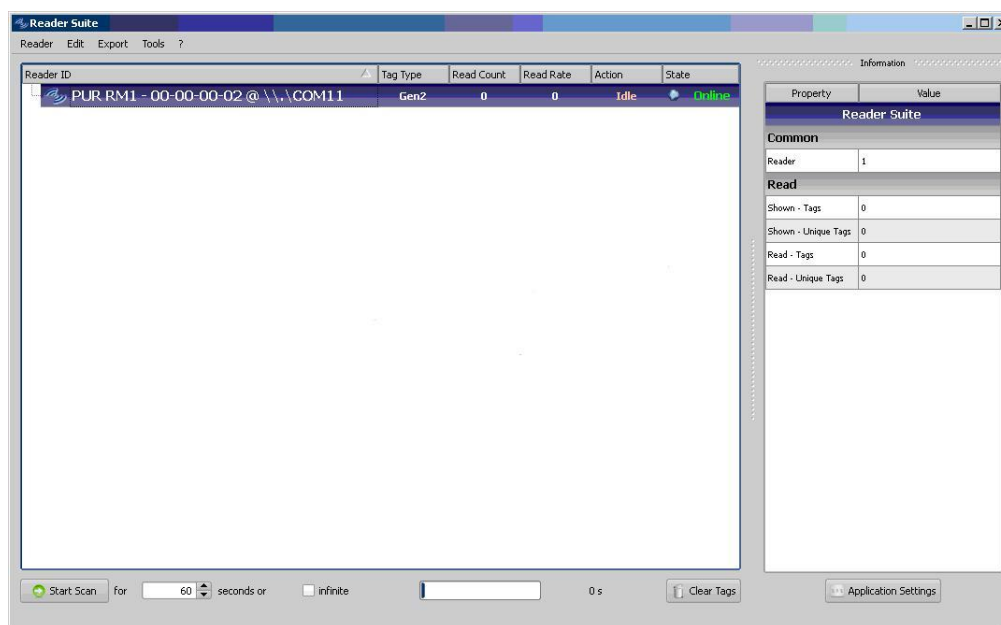


After this, a dialog appears where a must specify the COM port, where the reader was installed.  
(In this document we use COM7).

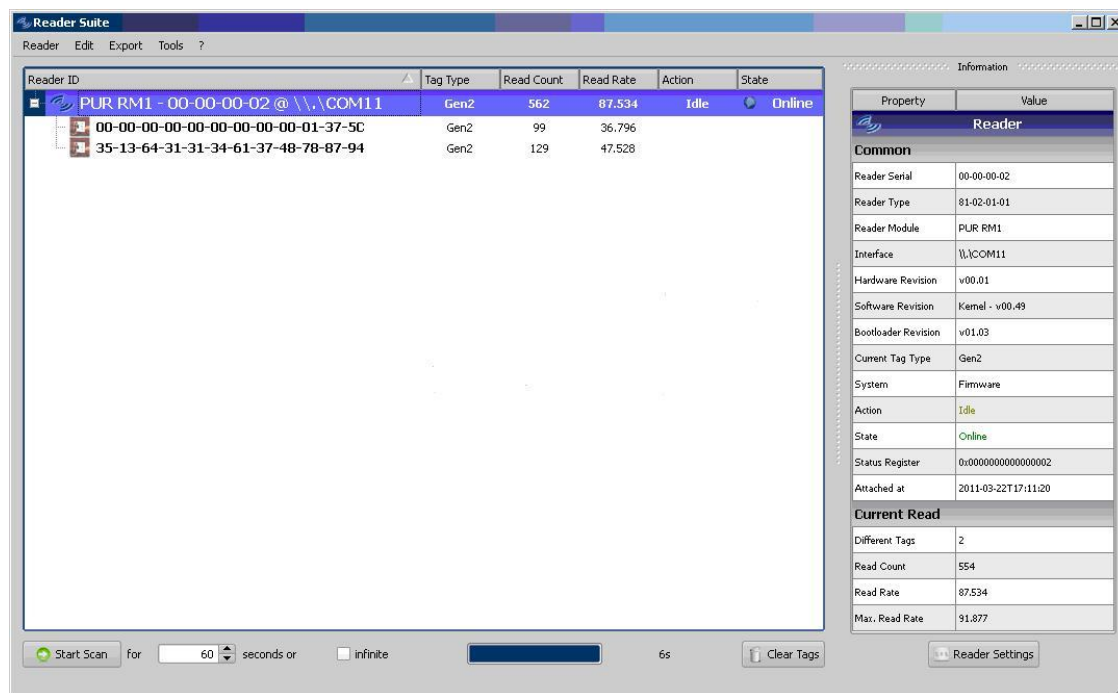


Double click the COM port and the Reader Demo Tool tries to add the reader.

If this was successful, the reader will appear in the main view of the Reader Demo Tool.

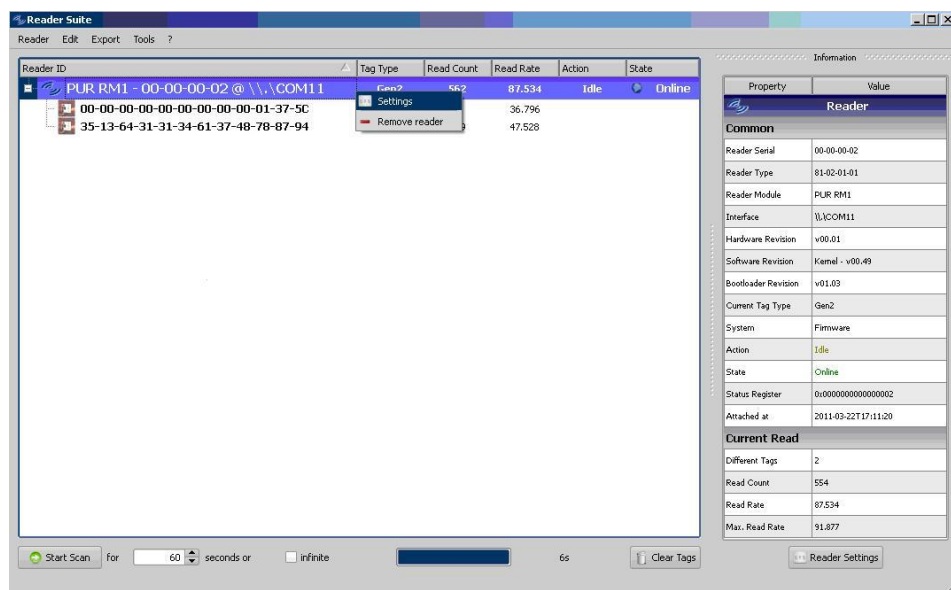


Now you can scan with the reader using the “Start Scan” Button at the bottom left of the application. If a tag is detected, it is shown below the reader.

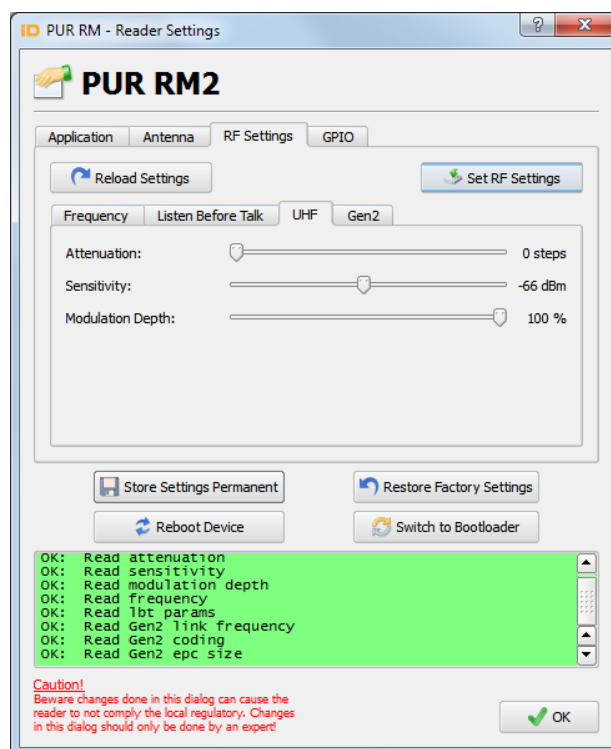


## 4 Configure the Reader

To configure the reader, just right click on the reader and select “Settings”.



After this, a dialog with the reader settings appears.

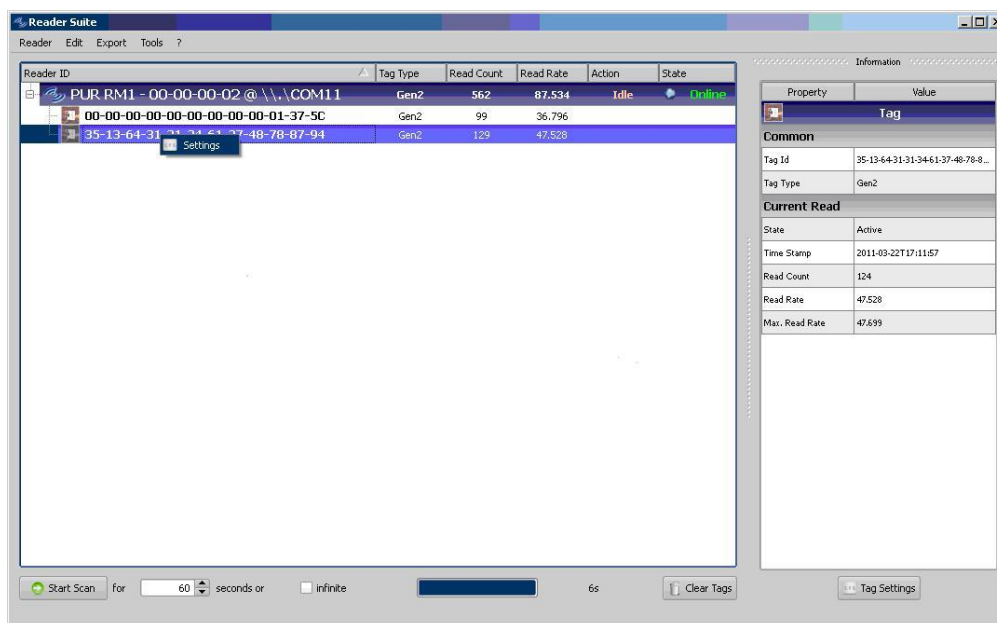


Here you can configure the reader. The status of each operation is shown in the text view at the bottom of the dialog.

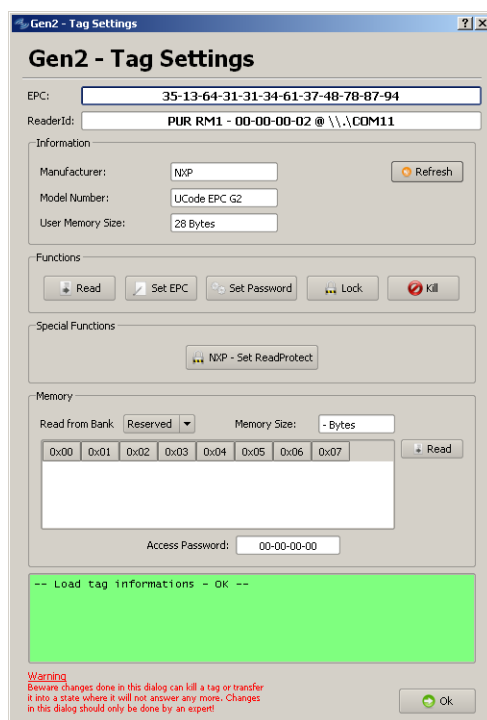
## 5 Configure a Tag

To configure a tag, just right click on the reader and select “Settings”.





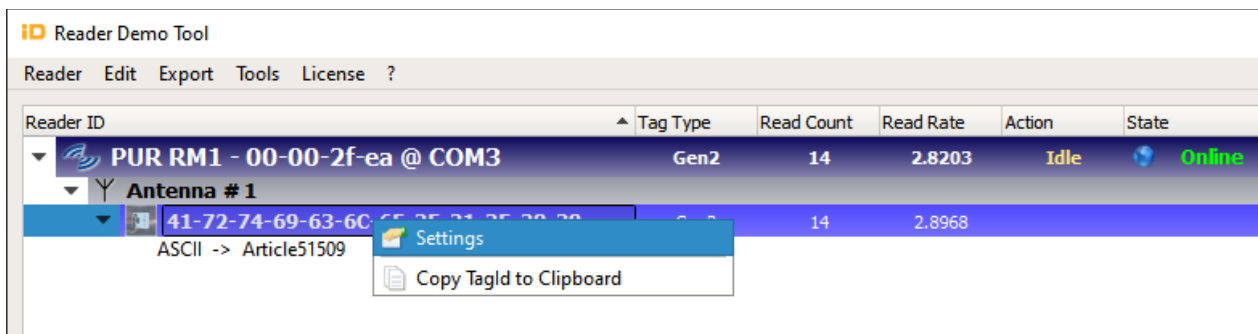
After this, a dialog with the tag settings appears.



Here you can change the configuration of the tag.

## 6 Reading the TID from a Tag

Scan for a tag. Then use the context menu (right mouse click) of the tag.



Chose "Settings" from the context menu. It will open this dialogue.

